

The Life and Times

Florida's Light & Life Park, Inc.
Newsletter

December 1, 2023

Volume 11 Issue 12 Page 1

FLORIDA'S LIGHT & LIFE PARK, INC.

5604 Deeson Road
Lakeland, FL 33810
Phone: 863 858-7504
Fax: 863 859-9775

Emergency: 863 608-3984

Park Administrator: Stan Welton
(Cell: 863 608-3982)
Email: floridallpark2@gmail.com
Website: lightandlifepark.org

Office Manager: Greg Thomas
greg.t@lightandlifepark.org

Office Assistant: Lori Jones
lori@lightandlifepark.org

Resource Specialist
sherry@lightandlifepark.org
(Cell: 863-255-3776)

Office Hours:
November 15-April 14: 8 am- Noon
April 15-November 14: 9 am - Noon

Lots Available for Lease

There are currently no lots available to lease for a RV or Park Model.

The following lots are available for a modular home to be put on them:

5359 Beulah Land

5885 Shiloh Path

Call the Park Office at 863-858-7504 for information.

News from the Park Administrator

Things in the Park seem to have picked up earlier than in previous years. As we move into December, even more of you will be showing up adding to the busyness. It is exciting. And we are ready for you!

The new audio-video center in Hood Hall is complete except for some minor testing. The audio portion is fully functional while some of the video still needs to be tested. The booth needs some type of flooring and once that is complete, booth construction will be complete (whoo hoo!). I especially thank Mel Stevenson for all his hard work in building the booth, running new cable, and installing the needed electrical components.

The staff has been working hard to get the Park ready for you this coming season. They have been trimming trees, hauling off debris, mowing and weed-eating grass, and cleaning rooms and buildings. Many people have commented to me on how good the Park looks. When you arrive and see how good it looks, please be sure to take the time to thank them.

Later this month, a court hearing is scheduled that will impact the status of our purchase of the property next door. One of the current residents has contested the notice to vacate the property. The outcome of the hearing will determine our next steps. Please be in prayer for this situation.

As a reminder to returning residents and information for new residents, there are four different areas for trash disposal in the trash area. Metal items, including aluminum and steel cans, are to be placed in the area surrounded by the white fence. We do recycle corrugated cardboard; all boxes should be emptied and flattened and then placed in the designated dumpster just outside the white fenced area. Large items should be placed in the large construction dumpster—this is provided as an extra service by the Park and donations should be made to help offset the cost of providing this service. Regular household trash is placed in the smaller dumpsters. Unfortunately, we do not have a method for recycling plastic so plastic items must be disposed of with your regular household trash.

Continued next page.

Continued from previous page.

I am looking forward to another busy season and learning about your busy summer activities. In the meantime, we will be celebrating the birth of our Savior. I pray you have a blessed Christmas!

Jan

Office News

It's December but there are no chestnuts roasting on an open fire and Jack Frost is definitely not nipping at our noses in Florida. It must be time for snowbirds to find their way back to Light and Life Park to thaw out. We are seeing returning faces every day and know that before the next Life and Times newsletter, most of you will be back.

When you get back, be sure to check in with Lori, Greg or Sherry. We will have your pictorial directory waiting for you if you didn't pay for it to be mailed. Calendars have arrived now, too.

All of our invoices went out in November. If you received a stormwater tax bill, be sure it is paid by the due date of December 15th. We will be charging a \$25.00 late fee if it is not received by the due date.

Once you have arrived in the Park, please be aware that you should let us know if you will be gone for more than a week. This helps us know who should be here.

We have had only one property change during November. Bob and Mary Lu Cannon sold their home at 5889 Moriah Place to Dr. Ron Ford. We look forward to having him here as a new resident. If you get to meet him, be sure to make him feel welcome.

As you make your way back to your home in Florida, be safe. There is so much fun ahead as well as spirit-filled services when you get here. We look forward to warmer weather here in the Park.

The Office Staff

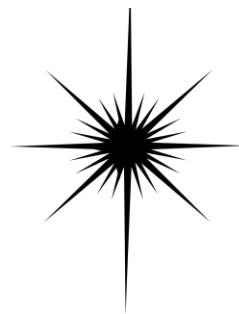
Check out the park website!

Copies of the newsletter, the Park calendar, places for sale, and much more can be found there.

www.lightandlifepark.org



*Christmas Blessings to
Light and Life Park
2023*



News from the Board of Directors

"For unto us a child is born"... Yes, that special season is here to celebrate the birth of Jesus our Savior. December at Light and Life Park will be a special time.

Upon arrival in the Park a few couple of weeks ago, I was struck by the fact as to how dry it was. Rainfall this year is way below normal. The Jordan is barely flowing. The good news is the hurricane season has been quiet for us. So, we will take it.

As we look forward to the 2024 season in the Park, the first BoD meeting is scheduled for January 8 and the Residents meeting the following Monday. We will be approving the budget for 2024 and begin discussions on capital projects for the year and infrastructure improvements. The budget for this year is still on track. As we look at the budget for 2024 season, there are 2 items that jump out: **utilities and garbage**. TECO rates continue to climb and so do our dumpster services. We wish there were obvious solutions for keeping these in check. We will be investigating ideas to help with these expenses. So, for now, a friendly reminder to all please "squish" your trash before it goes into the dumpster and turns off when leaving a Park building.

In preparation for the January board meeting, Committee reports should be prepared and submitted before our meeting on January 8. We expect to have a busy season upon us soon with many projects and activities to choose from. Hopefully the purchase of property next door will be completed soon, and cleanup can begin.

"Unto us a son is given". Isaiah 9:6. Celebrate the birth Jesus, travel safe and looking forward to another great season and Light and Life Park of Florida

Merry CHRISTmas

Larry Putnam

Fellowship Dinners With Programs

Our next Fellowship Dinner will be Monday, December 4 at 5:30 at Hood Hall with the Program immediately following at 6:15. You'll enjoy "Jesus... Light of the World" led by Carolyn Lindley.

You may arrange a menu for eight people at your table ahead of time ... OR ... just bring a large dish to share with others at the table you join. Some prefer planning ahead as accommodations can be made for special diets (diabetes, heart, gluten-free, etc.) whereas some others like the surprise elements of not knowing who or what will be at their table. Remember to bring your own place setting. Coffee is available for purchase; water is provided.

Residents with surnames beginning N-Z will do the set-up and clean-up. If you can oversee that responsibility, **PLEASE** contact Carolyn Lindley. Additionally, greeters are needed at the doors. We really appreciate everyone who volunteers.

Giving everyone a heads-up, especially for snowbirds who may need to pack costumes, props, etc. the Variety Show will be in March. Begin to think about how you can participate or recommend someone else for a skit, instrumental or vocal music, individual or group act, serious or silly, but short, limited to 3-5 minutes.

These events are always very well attended, and we appreciate everyone's help and suggestions; contact me to offer assistance.

Thanks!

Marilyn Stone, chairman jaxstone68@gmail.com

House Cleaning Available

Welcome back Light & Life Snowbirds! As many of you know, we have a cleaning business for residents in the park, and we have a few openings in our schedule for anyone wanting to have their house cleaned. You can contact us at: 248-990-3182.



Dave & Gail Cook

Where to Donate your Goods

The donations given at the Park to help others are appreciated. **Please take your donations to the following places:**

Food donations for Briarwood may be left on the designated table in Hood Hall.

We will now be accepting "linens" for Senior Orphans. Please refer to Senior Orphans article in this newsletter.

Jean Whipple takes several items to Talbot House weekly. See that article in this newsletter for details.

Thank you for your cooperation.

Stamps for Missions

All donated stamps are sent to Alliance Stamp Ministry in Fort Myers where they are sold to dealers. The money is sent to a publisher in Buenos Aires, Argentina where they publish Sunday school material in Spanish that are sold to at least eight Latin American Countries as well as Spain and the US. They are used by over 40 Protestant Denominations.

Try to leave at least 1/4 inch or more around each stamp or strip of stamps. They also collect picture post cards both unused and used. If used, please leave the stamps on the cards. The container is in **Hood Hall** for your convenience.

"Little is much when God is in it." The small amount of time it takes you to carefully cut stamps from envelopes and packages can greatly benefit others through the sale of these stamps. Additionally, you could pray for lives being touched through this ministry during those brief moments.

Thanks for your support! *Marilyn Stone*

A note about pop/soda cans:

Thank you for saving your aluminum cans which are taken by us to a recycling center in east Lakeland. The money received is being used to help our Park.

I am happy to pick up your pop/soda cans to haul to the Recycling Center, however it will make my job a lot easier if you remember the cans from canned goods **CANNOT** go in with the aluminum pop cans. These are picked up by someone else and need to be kept separate.

There is a bin in the metal recycling collection center near the dumpsters which is marked "POP CANS"--that's the one to use!

Thanks for your help.

Wes Crist

Medical Equipment Available

Maxwell Commons at The Villa has some medical equipment available that can be borrowed by any Park resident. Call someone you know in the Villa to help you. Please sign out the equipment you are borrowing. There are wheelchairs, walkers, rollators, portable pots, and shower seats. Please notify a Villa member when you are returning an item, so we know it has been returned. Please **don't** leave it on the porch. We are **not** presently accepting any equipment donations due to lack of storage space.

Talbot House Ministry

The ongoing deliveries of prescription bottles, unused medicines, good clean clothing that you no longer use, and small household items is an ongoing project. Please continue to save these helpful items for the homeless shelter and the Good Samaritan Clinic. Please deliver them to the Whipple's porch at 5866 Deeson Road any time. Jean will get them delivered.

Jean will take your items to Talbot House on Wednesdays. **Please note this change! Donations will be accepted all day on Tuesdays and until 10:30 AM on Wednesdays. PLEASE leave your items in Jean's screened porch.**

Should you wish to send financial assistance to this work, the address is: 814 North Kentucky Avenue, Lakeland.

Thank you! Jean Whipple

Update on Benches

Ed Hamilton has just made a delivery on benches he had ordered. He is working with the new manager who is making the benches and would like requests to be made to the Park Office until the details are sorted out on his process.

You may continue to collect plastic lids. **Please be sure they are clean.** They may be stored at his place while he is away, but they need to be put inside his storage containers.

We will keep you posted if anything further develops.

SENIOR-ORPHANS

Thank you for your continued support of Senior Orphans through your donations of ***gently used*** bed linens.

Senior Orphans helps local, indigent seniors living with no family support and meager monthly incomes.

The drop-off location is in the totes in Hood Hall designated for Senior Orphans.

Please label your linens, as this saves our S.O. coordinator valuable time when trying to determine sizes.

Attached is a picture of an example of how to label each item.

Terri Boda Coordinator



Blood Pressure Clinic

Blood Pressure clinics will start again January 1st. Watch for further details. I am a full-time resident now and am willing to take anyone's blood pressure at any time.

I can come to your house, or you can come to mine, 5437 Bethel Dr.

JoAnn Willet RN
989-615-8430



50th Anniversary Celebration



Celebrating your golden wedding anniversary in 2024?

A reminder for those celebrating - please submit your pictures to Carolyn Lindley by November 15th via email.

Those being honored include: EJ & Brenda Miller, Stan & Gloria Welton, Randy & Faith Reesman, Fred & Barb Hartman, David & Gayle Hooks, Dennis & Jill Wood, Bruce & Debbie Fitch, and Vernon & Kathy Kauffman. If I have excluded anyone, please let me know.

Want to be involved? We'll need help with planning, setup, decorating, greeting, serving, and clean up.

Thank you,
Carolyn Lindley carolyn_lindley@yahoo.com
50th Anniversary Chair

L & L Aqua Splash Water Aerobics

Come & enjoy fun in the sun with a low-impact workout in the water to enhance health & wellbeing.

Routines are choreographed to music and designed to promote improved muscle strength, endurance, flexibility & core balance without the stress of land exercise.

Splash times are offered **year-round**, twice weekly.

Weather permitting, **December Aqua Splash** will be held on Mondays & Fridays at 2PM.

Updates are sent via group email
(neighborhood-news@googlegroups.com)

and also posted on Facebook
(Light & Life Park, Lakel)

Karen Castle-Williams
allforyum@aol.com
704-502-0466.

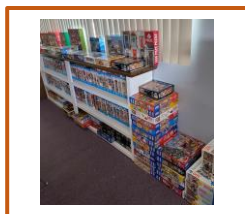


Bucket Listers



Christmas will be here soon! The most wonderful time of the year!

Thank you for all of your puzzle donations! The Bucket Listers are looking for a woodworker who would like a project. We need a shelving unit to hold our collection of puzzles. If you would like to help, contact Janet Wight. 989-944-4440.



You are invited to choose a puzzle and complete it at Hood Hall or take it home and complete it. There is no check out system in place.

Don't forget there will be a Hot Dog Lunch at the Christmas Craft Show on 12-1-23 from 11:30 am to 12:30 pm. Due to supply chain issues **WE WILL NOT** be featuring Koegel's Hot Dogs as advertised in last month's newsletter. Sorry for any trouble or inconvenience this may have caused.

Did you notice the new Christmas lights on the fence at the pool?



Did you notice the new side tables at the pool? Please do not sit or stand on these tables. They are big enough that you can share it with the person next to you, but they are not intended to be seats or step ladders. Thank you in advance for your cooperation.

Don't forget Tuesday Night Trivia and Tuesday Night Movies start in January on alternating Tuesday nights at 7:00 pm.

Thank you for your support and Merry Christmas!

WOOD ACTIVITIES NEWS



The Wood Shop will soon be a busy place. We expect the sawdust and wood chips will be flying as the migration of the seasonal members continues into the Park.

Please stop by the office to pay your \$15 dues, sign the waiver form, and receive your welcome letter.

All past members and those interested in being members should plan on attending the first meeting of the season on January 5 at 9:00 AM. We will be asking for input as to improving the shop including replacing or adding new machines. Your input will be appreciated.

Last year we added a concrete curb in the parking lot, replaced one of the wood lathes, hosted the Trail Life boys for a fun weekend, prepared 100's of walking sticks by sanding and inspecting, participated in the craft show, and held classes in woodturning, scroll saw and carving.

We also are still looking for volunteers to lead a class in some form of woodworking. So, if you have a talent you wish to share, please let know. Your leadership team is: Larry Putnam, Gary Mace, Al Pogue, Jim Falconer, Dale Schantz and Mel Stevenson.

Safe travels and God speed

Larry Putnam



2024 CPC golf tournaments!

Save the dates!

Two-person (men and women) Tournament
(18 holes Scramble)! Bring your partner!
Jan 5, 2024 (Friday) Earlier start time 10:00 AM

Club Championship Tournament (two flights) for
Men's & Women's categories (18 holes) Feb 2, 2024
(Friday)

Note: if Field Day doesn't happen in 2024, the closest
to the pin and longest drive contest will be held as part
of the Club Championship!

Two-person Blind Draw tournament (18 holes) March
8, 2024 (Friday) Shot gun start at 10:00 AM. Men's &
Women's Categories. \$50 to each winning team, plus,
names on a trophy in Hood Hall.

Three club Co-Ed tournament
April 1, 2024, Monday, 18 holes. 10:00 AM

The Player's Club

Ed Stockwell 517 861-0481
edstockwell48@gmail.com

Light and Life Bowling

It is getting closer to bowling season. When you come
south you might want to take advantage of the \$80
four-month pass that lets you bowl 4 games a day, 7
days a week.

Our organizational meeting for 2024, will be Tuesday
January 2nd, 1PM at Hood Hall. We will start bowling
on January 9th. Please make sure at least one of the
people on your team is at the meeting.

If you haven't joined a team and would like to, please
be at the meeting and we will get you set up.

The repairs at Orange Bowl Lanes continues and they
are now working on the snack bar area. But no fears
they have a food truck outside and your food will be
delivered to you.

Barb Hartson

Gad-About News

Thank you to all the ladies that joined us on the
trips in 2023.

A special "Thank You" to all the ladies who drove
us there and back safely.

Here is a peek into what we have planned for
next season, 2024

Jan 11 - HSN Shopping Outlet
Jan 25 - Secret Staircase Restaurant
Feb 15 - Lunch on Limoges & Giraffe Ranch
Feb 29 - Silver Springs Park & Glass-bottom
Boat Tour
Mar 14 - Back Porch & Stable Home Decor
Mar 28 - Russell Stover Chocolate & The Villages
West Tour

Things are subject to change until we can confirm
all the details in November/December when we
return to the park.

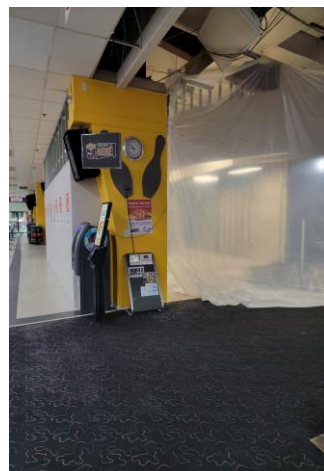
Keep thinking of things for the future and let me or
Peggy know. Our hope is that we can keep the
away trips to 2 hours or less whenever possible.

Flo Grabowski

Cell 931-797-2639 coachfllc@gmail.com

Peggy Dunn

Cell 248-766-5537 pegjim2000@yahoo.com



Construction



Food truck

Library Information



Library Notes

We are trying to improve the library continuously. It takes a lot of work, but we have had good librarians who have worked hard. Here are just a few:

- New books, new series
- Updating to printed labels
- Books labeled with genre
- Constant examination of what we have, what's read, and filtering out of old material
- Improving our Free Methodist section
- Date due slips put in the back to write the due date
- White labels put on new to us books in the New Book Section

Books are to be signed out for 1 month. DVDs, 2 weeks.

Look for the survey on what magazines you want in the library.

Book Review

Psalm 23 Mystery Series Book 1: The Lord is My Shepherd by Debbie Vigie

We were fortunate to have an entire set of books gifted to our library, and the series is still being written. We have the first 18 books, with 5 books still to be completed. It is entitled *The Psalm 23 Mystery Series*, yes, based on the 23rd Psalm. Each phrase is the title of a book.

The two main characters are Cindy and Jeremiah.

Cindy's church is getting ready to celebrate Easter, and Jeremiah's Temple is preparing for Passover when Cindy literally stumbles over the body of an unknown man lying dead in the sanctuary. The church was locked, and a bloody cross necklace on the floor seems to be the only clue. The killer is likely a member of the congregation, but there are hints that similar deaths have happened in the past. Are Cindy and

Continued next column.

Continued from previous column.

Jeremiah dealing with a serial killer? They have to unravel the clues before Easter Sunday arrives and more people die.

Cindy and Jeremiah come from two different worlds, even though they work right next door to each other. Cindy is a strong Christian who lives a normal but somewhat dull life, working as a church secretary. Jeremiah is a Reformed rabbi with a mysterious past full of danger and excitement. But one eventful Easter/Passover week, the two find themselves working together to solve a murder and stop a serial killer from striking again. Solving the mystery should put an end to their alliance, but the church secretary and the rabbi quickly find themselves enmeshed in another mystery. Soon the two form a friendly alliance and friendship, exploring personal history and faith and growing closer with each passing adventure. Despite their differences Cindy and Jeremiah find a lot of common ground.

God Bless!

Gloria Welton
Librarian

Our HORSESHOE pits are open.

The pits are located between the miniature golf and shuffleboard courts.

For nighttime play the light switch is inside the miniature golf shed on the east wall.

Looking for someone to schedule this for the winter season.

Game Night

Game Night is held on most **Friday evenings** at 7:00 PM in **Maxwell Commons**.

Bring your favorite game and friends and have an evening of fun and fellowship.



A Good Read

Mel Starr, our resident author, has copies of his medieval mysteries, including the newest, #15, **SUPPRESSION AND SUSPICION**, which was released in October.

He has a new book being released in October just in time for the next winter season here in the park.

Even though the Starr's have left the park for the summer, you can find all his books at Amazon.com.

"Growing old is like a grammar lesson: we find the present **tense** and the past **perfect**."



Pickle Ball/Tennis court is looking good

Pickleball and Tennis

The pickleball/tennis players would like to thank those who attended and supported the two fundraisers/dinners this year.

The courts are always open but are undergoing some construction. Lines will be added this month.

Denise Tomasello
517-250-1420



Shuffleboard

With fall season here and our snowbird friends arriving back at L&L we will be getting shuffleboard in full swing. We will be Meeting on **Mondays at 1:00**, and **Tuesday and Thursday nights at 6:30**. The courts are always open to play anytime except when a church service is on.

If you are new to shuffleboard and want to learn, just come down on Mondays, Tuesdays or Thursdays and someone will be glad to help you learn the game. Or you can call me, Dale Schantz, and I will be glad to go over and help you get familiar with the game. We are looking forward to many new players this year.

We have three projects that need to be done this year.

- Both buildings need to be painted,
- we need to seal the courts and
- We want to put up LED lights on the score boards.

Projects that have been completed this summer are:

- court benches have had the wood replaced with composite boards,
- The long bench on the west side has been shortened and the wood replaced with composite boards.
- We have shortened the gates so that they are the same height as the fences.

We hope that you had a blessed summer, and we are looking forward to having you spend the winter with us.

Dale Schantz
863 816 5422



Salvation Army Crafting Event

Join us in Hood Hall

Friday December 15, starting at 1:00 pm

Saturday December 16, starting at 8:00 am

Bring your projects to work on in a light hearted atmosphere.

Come and go as you please. Cost is \$20.00 for a half of an eight foot table where you can work on your project.

All proceeds go to the Salvation Army Transitional Housing Program.

Please RSVP by November 10th to Cindy Lower at cindylower950@gmail.com

Anyone is welcome to just come and watch. Also, some of the ladies have things to sell.

Best Regards

Cindy Lower

Our beautiful Park



Don't forget to look for the amazing foliage and the creatures who don't seem to be scared of us.

By Marva Peck

An update on the Pictorial Directory

The pictorial directories have arrived. If your picture is in the Directory, you may pick up your free copy at the Park Office. New members of the Park may also pick up a free directory.

If you want a second copy, a limited number of directories will be available later in the season at a cost of \$3.00 each.

Barb Hartson and Pat Wilkins

Cars and Coffee

2nd Saturday of every month **8:00am to 10am,**

December 9th everyone is welcome to come and view great restored autos and custom hot rods.

Join us in L&L Park at the Church parking lot!

Come, join the fun, and have a cup of coffee and a doughnut!

Larry Thomas 540-447-0458

Men's Fellowship Breakfast

Men's monthly Fellowship Breakfast is **this Saturday, 12/02.2023.** We meet at the church East parking lot to carpool to the Golden Corral. We leave the parking lot at 7:45. For more information feel free to contact me, Dale Schantz at 989 975 6710, or 863-816-5422. This is open to all men associated with L & L park.

Newsletter Deadline

Please be sure that your submissions to **The Life and Times** are delivered to the newsletter editor, Barb Hartson by the **20th** of the month prior to publication.

Please use this email: bhartson@gmail.com. Email is the preferred method.

The January deadline is December 20th unless the activity is in the latter half of the month. Then check with me to see if you can still make it in.

Christmas Dinner

This Holiday is coming up faster than you think. We will again get together as a park to celebrate on Monday the 25th at 12 noon.

There will be a sign-up sheet in Hood Hall on the credenza which will give us an idea of how many to plan for. Please let us know how many in your party and what kind of dish you wish to bring.



A singular Christmas Event

Calling all Single Adults in the Park and/or Church.

Once again Arlene Mahen will host the Christmas Gala you have all been waiting for.

Come to 5416 Zion Ave. at 6 PM, December 2nd. You won't be disappointed.



Craft Sale

If you are a crafter this is your time to Shine. Friday December 1st is our Annual Craft show and sale at Hood Hall from 10 am to 3 pm. There will be baked goods for sale as well.

The Bucket Listers will be selling a Hotdog Lunch and A Gift-Wrapping Service for Donations. They will wrap *ALL* of your gifts if you wish!!

Blessings,
Becky Smith
231-349-2993



Operation Christmas child

We had a goal of 100 shoe boxes for Operation Christmas Child this year and we topped it!! Thanks to all of you who contributed items, money and your time to assemble the boxes.

We had the cash to cover the mailing cost and a great turn out for filling boxes. The grand total was 112 after we sent someone out to finish about 7 boxes.

Watch for information about how we may start working on next year's drive even earlier.



THANKS AGAIN!!

KATHY MILLER 716-598-1924,
Kathymiller5159@gmail.com

**Light and Life
Free Methodist Church**

5730 Deeson Road
Lakeland, FL 33810
Phone: (863) 858-6361
Fax (863) 858-3982
Email: church@lfmc.org

Pastor: Jeff Bellinger
Associate Pastor: Roger Haskins
Secretary: Pam Hill
Email: church@lfmc.org
Office hours Mon. – Thurs. 9:00 am – 2:00 pm

A Note from our Pastor

This time of year, we talk about Mary a lot.
But what about Mary's mother?
Someone had to raise Mary to find favor with God.
Someone had to raise Mary to treasure purity.
Someone had to raise Mary to honor Joseph.
Someone had to raise Mary to know the voice of
the Lord, even though they were living in the silent
years.

Mary's mother, we don't know her name.
We don't know what her life looked like.
We don't know who she was married to, or what he
was like.
All we know is, she raised the mother of Christ.
She raised a daughter, highly favored of the Lord.
She raised a daughter to fear the Lord, when the
Lord was silent.

This is what we know.
Mary's mother didn't have an encounter with Angel,
telling her to raise Mary carefully because of
how the Lord was going to use her.

Mary's mother chose to raise Mary wisely so that
the Lord could use her.
Mary's mother didn't have an encounter with Angel,
telling her to honor her husband, because Mary
would need to honor Joseph when he told her to
travel to Bethlehem while she was great with child,
when he told her to flee Herod's wrath (before it
came to pass) in the middle of the night, Mary's

Continued next column.

Continued from previous column.

mother just honored her husband, obeyed, and
submitted to him because she knew that's what
shewas called to do.

Mary's mother didn't have an encounter with an
angel, giving her a word to cling to in those dark,
silent years. But she clung to the word of God that
she had. She trusted his word, even during his
silence.

And her home shone with divine favor because she
made choices in the dark, that affected the
whole world.

Mary did you know?
She knew some, she knew what the Angel told her.

But Mary's mother?
She had no idea.
But she chose to raise a daughter that the Lord
could use.
And that choice still affects us all today.

Who you raise can affect eternity.
The example you set in marriage, can affect
eternity.

Your home can make the gates of Hell tremble.
But it starts with you.

- Sarah Trent

The light you shine into the darkness can
make a difference in your family's life, to the
ones around you, and for generations to come.

Just remember: Mary may have known, but
her mother did not.

Merry Christmas!

Pastor Jeff



Outreach Ministry

Wonderful news that our food ministry is once again connected to our L & L Church. Financial donations may be sent or given there and we continue to accept food donations at Hood Hall daily in dedicated plastic bins. You have one other way to donate at the weekly bread and sweets day here in the park. My visiting nieces were fascinated by the selection. "But Aunt Chris this stuff is expensive." She may have said that when I put a small donation in the basket.

Thanks to generous donors we were able to give 28 complete Thanksgiving meals to neighbors this year. Their smiles are a great reward but knowing we are planting a seed of Faith in Jesus is priceless.

One question asked was why do you do this? Answer: God blesses me so sharing and passing it forward. A family friend said wow your park actually puts feet to your prayers with action. Want to help be the feet donate, pray, distribute or all three.

We added "BAG" distribution to fellow park members weekly. Last week 4 this week 5. We try to add fresh fruits and vegetables, eggs, another protein and pantry staples. This has an added cost of roughly 50 dollars a week. It is anonymous so if you have a need let a team member or myself know and we will do our best.

Looking Ahead: Two fundraising events are planned: An amazing pulled pork dinner prepared by Dave and Gale and a Souper Bowl lunch on Super Bowl Sunday in February.

Please consider making food outreach a regular part of giving. Not just food for the body us given but encouraging fellow Christians and reaching the lost.

Let me (Christine) conclude by saying God and I talked. I said this is not my type of ministry. He assured me it was for now. Truly feel blessed to have listened love being a cheerleader for this team.

Christine Aurich Program Director
Chrisaurich@hotmail.com 616 402 8241

HOME BIBLE STUDY

Come join us in the Church Annex for this informal Bible study. **Everyone is welcome.**

We are currently discussing the Psalms and how they can impact our lives.

Cindy Igel: 716-803-3961 or Pam Hill: 863-808-3779
 Email: church.llfmc.org

A New Endeavor

1 Peter 4:10

Each of you should use whatever gift you have received to serve others, as faithful stewards of God's grace in its various forms.

I want to pitch an idea that has been on my mind for a while. I would like to establish a "**Community Care Team**" as a ministry of the church to expand on what is already in place. The scope of the Team would be to provide care for people who are going through difficult times. Sickness, hospitalization, recovery, loss of a loved one or people who are just in need of a visit from a friend.

Many of you have the gifts, graces and a heart to do this type of ministry and that is who I am looking for. I would like to populate the team with people who have the gift of hospitality, or the gift of encouragement as well as those who enjoy serving others. This would include things such as preparing a meal, offering transportation, doing some household or outdoor chores. Maybe we could even have a card ministry as part of this to send an encouraging note as the Spirit leads.

If you can see yourself filling any role in this ministry and would like to be a part of this team, please respond to my email. This invitation is open to any resident of the park.

Pastor Jeff

Distribution

We will be in Hood Hall Fridays at 10:00 with bakery items from both Publix and Panera. The pick-up schedule is changing, so the available items will be a little different starting in October.

If you are new to the Park or just coming back for the season, **this is free to all and all are welcome to come find a treat.**

While this is free, we will have a basket for any donations for our Outreach Ministries, and these are greatly needed and appreciated.

Please bring your own bags or containers for the items you choose.

Karen Wright Coordinator